



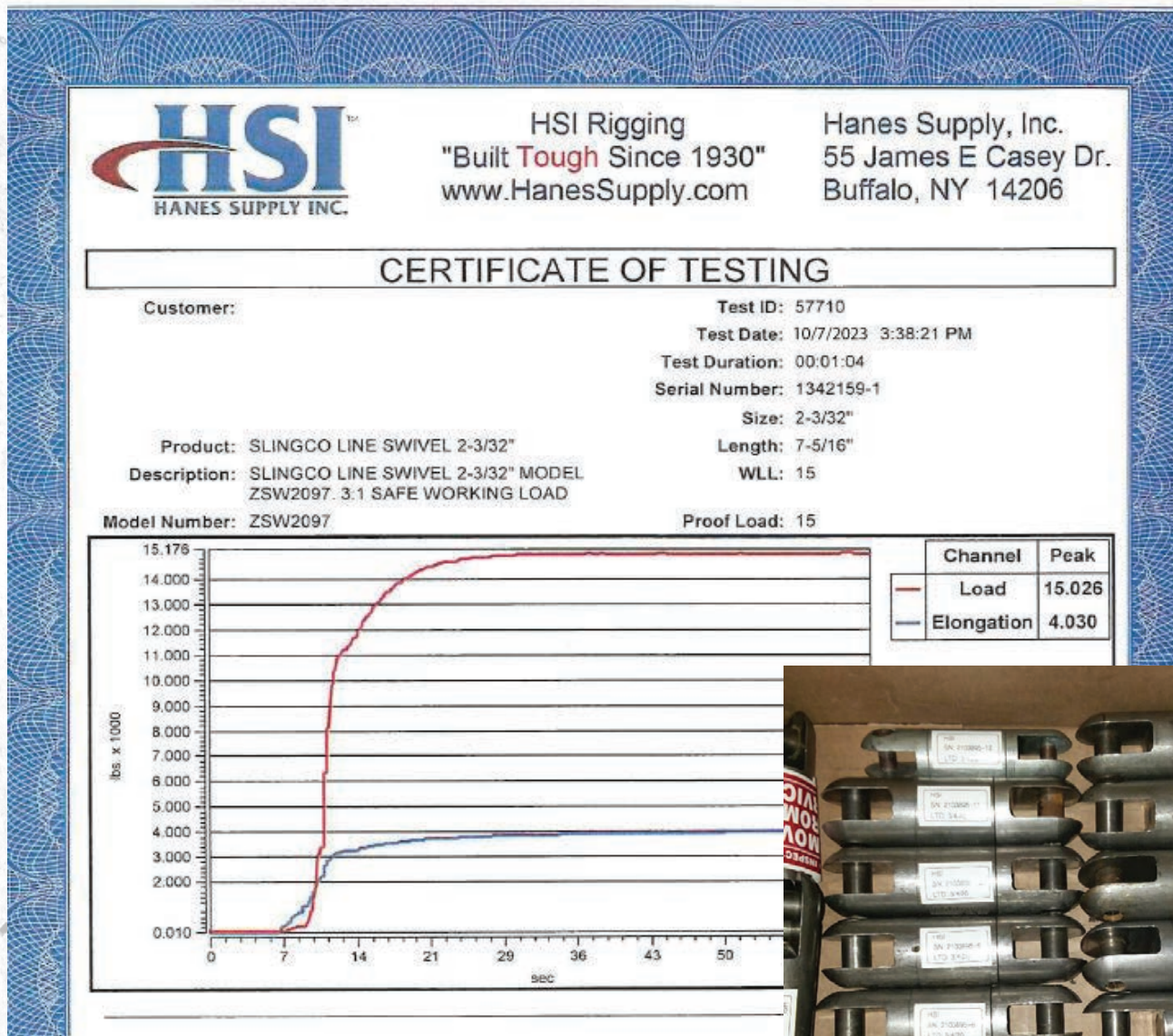
HANES SUPPLY WINTER UTILITY PRODUCTS

Line Swivel Inspection and Testing

- We test on a 600 kip Calibrated Horizontal Test Bed;
- 70 kip RAM used for these Line Swivels;
- We Test all Line Swivels per manufacturer guidelines;
- Tensile Test to 100% of the Swivels 3:1 WLL



Example of a Test Certificate from the HSI Test Bed



HSI SERVICES FOR THE UTILITY INFRASTRUCTURE CONTRACTOR

Comprehensive Rigging Training

Our Comprehensive rigging training courses are designed to teach competent rigging skills and safe rigging practices per ASME B30, OSHA 1910 and OSHA 1926 standards. A variety of course levels are available, ranging from rigging basics to advanced load control and load calculation.



Rigging Inspection On-Site

Our onsite rigging inspection service is a comprehensive and personalized solution that helps you to ensure the safety, compliance, and readiness of your rigging equipment. Our experienced inspectors will work with you to identify your specific needs and develop an inspection plan that meets those needs. We will then thoroughly inspect your equipment and provide you with a detailed report of our findings and recommendations.

Hoist and Tool Repair

Hanes Supply is an authorized warranty center with factory authorized/certified technicians. Quality workmanship and great customer service are our top priorities! We can service and repair electric tools, hydraulic and pneumatic tools, hoists, winches, small engines, slings and more!



Rope Splice Training

HSI offers Transmission and Distribution specific rope splice training. We can offer introductory courses as well as expanding upon your crews knowledge of various HMPE and other rope compositions.



Reach out to Rob Bruno for more details!
716-983-5918

PRODUCT SPOTLIGHT

Stock The Site!

Buy \$1,000 in Nylon or Polyester slings, get a free Milwaukee 48-22-8425 case!"



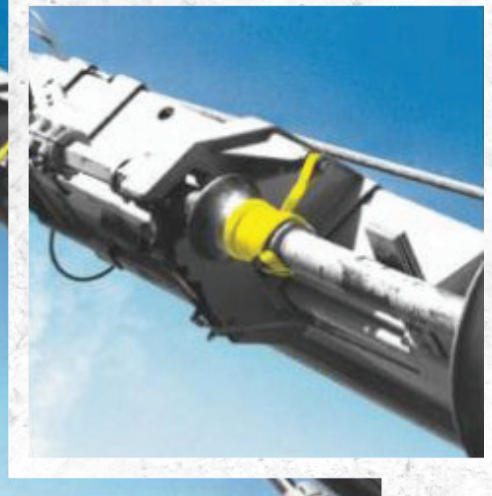
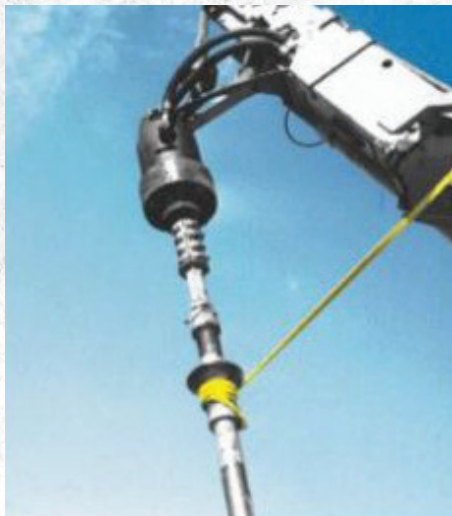
FREE!



HSI "Wind Up" Auger Slings

- 8, 9, 10, 12 Foot Sections
- Incorporated Cordura on Body and Eyes for Durability
- Fabricated in the USA by Hanes Supply, Inc.

1Z-AUGER-SLING-EE2-12

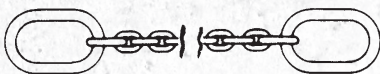


Pole Setting Chains

- 10S00 5/8" X SIZE' Single Chain Sling GR100 Alloy
- Fabricated in the USA by Hanes Supply, Inc.

10S005/8

S00



Vehicle Recovery Rope

- 1" 12 Strand Blue - 5:1 SF
- 4-6" Spliced Eye
- All Spliced Eyes with Cordura
- Vehicle Recovery Tag Added
- Fabricated in the USA by Hanes Supply, Inc.

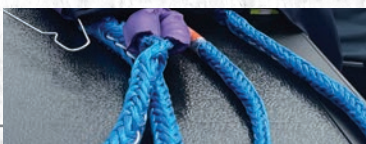
HMPE1EE-00



Line Sagging Rope

- 5/8" 12-Strand Blue WLL 9500 lbs 5:1 SF
- 4-6" Spliced E/E
- Tag with Protective Clear Jacket
- Fabricated in the USA by Hanes Supply, Inc.

HMPE5/8EE-00



PRODUCT SPOTLIGHT

MRP Pocketbook Grips – Manufactured to Specifications



6 Bolt and 9 Bolt Comealong Grips

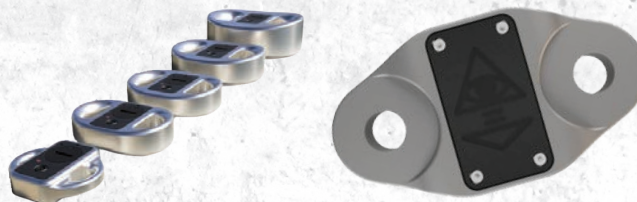
MRP Manufacturing's 6 Bolt Pocketbook Comealong Grips are used for the pulling of wire up to an initial sag-tension; is a self-contained unit so there are no loose parts. Their clamps are modeled from industry standard. Clamp down bolts are peened so when opened for installation, flange nuts will not be lost.



6B1.055-0V, 6B.587

BLUEMAX USA

Bluemax Compact Dyno and Rope/Sling Dyno
MICRO, MILLI, CENTI



CAPACITY	1000 lb - 44000 lb
MATERIAL	TITANIUM Ti6Al4V
HOUSING	ACETAL BATTERY: LITHIUM POLYMER, 0.925WH
BATTERY LIFE	2,000 HRS AT 0.1HZ, 20,000 HRS at 1HZ, 200,000 HOURS AT 10HZ
MEASUREMENT RANGE	55LBS IN 1LB INCREMENTS
ACCURACY	± 1% FULL SCALE
ENVIRONMENTAL	WATERPROOF TO IP67
OPERATING RANGE	0°F TO 158°F
COMMUNICATIONS	BLUETOOTH LE - BLE, BROADCASTING OR DIRECT TO GAT UP TO 320 FT



Reach out to your Rep for Rental, Lease, or Purchase Options!

Good Rigging Control System

The Good Rigging Control System, or GRCS, gives you the mechanical advantage you need to safely raise and lower anything from tree branches to transformers

GR2000U



TOOLING

Milwaukee® 2.35 HP Utility Polesaw

- Highest Chain Speed in class
- Full Throttle In under a second

3013-21



Check out our Current Milwaukee Tool Promotions!



**15 FT
OVERHEAD
REACH**

Utility Solutions Load Break Tool w/ Rotating Head



USLR-FLEX-1

27 KV LOADRANGER FLEX-1

LOAD-RANGER® FLEX-LT™

The LOAD-RANGER® line just got even better. Introducing the revolutionary LOAD-RANGER® FLEX-LT™, the first-ever load break tool with a 180° rotating flex head. With No-Pinch easy reset, and at 1lb lighter than the competition, the LOAD-RANGER® FLEX-LT™ brings with it all the best features of the legendary LOAD-RANGER® line. The only thing that can beat a LOAD-RANGER® is another LOAD-RANGER® are peened so when opened for installation, flange nuts will not be lost.



BLUE STRIPE® Telescopic Hot Sticks

- Epoxy Resin
- 40 Foot, Base Diameter 2 7/8", 9 Sections, 13lb, 8oz, Lengths in 40, 35', 30', 26', 21'
- Easy Tip Lock Replacement
- The BLUE STRIPE® Fiberglass Hot Stick line uses Epoxy resin which is the most water-resistant, durable, and longest-lasting resin available and has superior electrical properties. Our sticks have a very high resistance to failure due to water absorption or delamination.

USTS-040



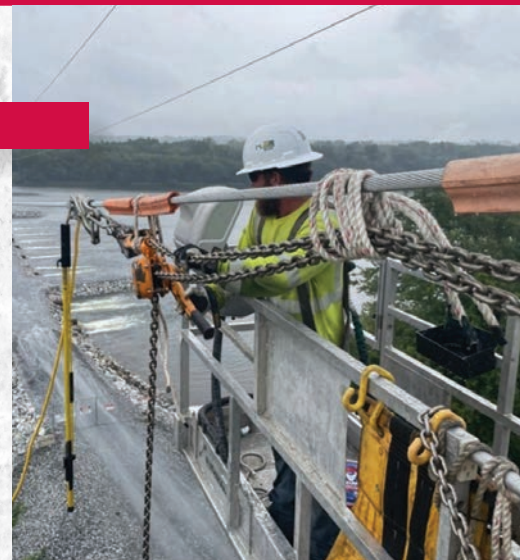
TOOLING

HARRINGTON LB015-5 LB SERIES COMPACT LEVER HOIST

Harrington LB lever hoists combine easy operation with a compact, low headroom design that easily handles real-world demands. Rated the number 1 selling lever hoist in the U.S., these hoists can be used horizontally, vertically, inverted or at any other load angle and have the strength to get the job done.

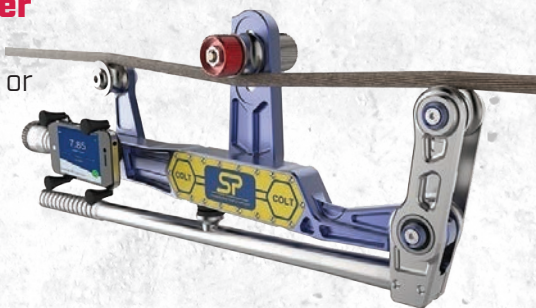
HARRINGTON
A KITCO GROUP COMPANY

- 1.5 Ton Load
- 64 lb Rated
- 5 ft H Lifting
- 1.3 in Hook



Crosby® COLT – Clamp On Line Tensiometer

- Lightweight wire rope tension meter for fast and accurate measurement of tensions up to 11,000 lb or 5000 kg and up to 1 in or 25 mm diameter
- Unlimited wire rope calibration database via Android or iOS app.
- Long battery life of 1000 hrs operational time.



COLT5T



Check Out Demo!

Crosby Straightpoint Clamp
On Line Tensionmeter (COLT) - YouTube

Crosby®



know the load

Klein Tools® Transmission Grip

- Securely pulls ACSR, AAC and bare copper cables
- Holds cable sizes from 0.68 in to 1.42 in (17.3 mm to 36.1 mm)
- Fine Sawtooth jaw geometry provides greater grip strength
- Spring closes grip on cable to hold the initial position
- Made in the USA

16499



Underground Line Pulling Cleaning Network Panels

Milwaukee® 0910-20 and 0920-20
Milwaukee® 49-90-2024 and 49-90-2037

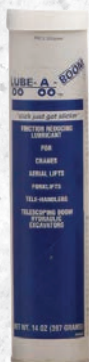
- Sent to Field for Primary Line Pulling (1-1/2 in – 4 in) & Over 250 ft
- Vacs Used to Remove Water from Pipes Before Line Pulling
- Underground Department Focused
- Cleaning Network Protectors for Maintenance



SAFETY SUPPLIES

Lube-a-Boom® Cartridge 14oz

- A specially formulated synthetic lubricant containing PTFE and molybdenum
- Outperforms conventional petroleum-based greases
- Excellent performance in cold and hot weather
- Superior rust and corrosion protection



010102-17862

HDE Voltage Detection Network

- Warns of high voltage electric fields using WAVi® technology Work Area Voltage Indication
- Visual and audible warning indicates the location of energized fields in a red-yellow-green sequence
- Detectors communicate with each other within a mesh network
- Remotely control detectors through the LOOKOUT® mobile app
- Battery life of up to 500 hours in Monitor mode and up to 8 hours in Alert mode
- Durable water-resistant housing

LO-P6E-11113



Spill Kit

- Class 4 – rated to 36,000 Volts AC
- Meets ASTM 1048-14 Standard, ISO 9001:2015
- Type II Ozone-resistant rubber to prevent long-term aging/checking
- Molded construction provides superior flexibility to cover many irregular shapes



Roll-Up Signs

- The roll-up versions of this sign are provided with velcro strips around the word AHEAD to accommodate different overlay messages. Overlay size to be 22 x 7"
- Fluorescent Non-Reflective Solid Vinyl signs are recommended for day time use only, this material is not MUTCD compliant when used at night.



Part #	Description	Price
CON72002 DSB-100	Stacker Sign Stand, Zephyr Style	\$134.52
CON72005 36FV-MS	36" Roll Up Sign "LANE CLOSED"	\$44.42
CON72010 36FV-MS	36" Roll Up Sign "UTILITY WORK AHEAD"	\$44.42
CON72015 36FV-MS	36" Roll Up Road Sign (Flagger Ahead)	\$44.42
CON72020 36FV-MS	36" Roll Up Sign "MEN WORKING"	\$44.42
CON72021 36FV-MS	36" Roll Up Sign Symbol Men At Work	\$44.42
CON72030 36FV-MS	36" Roll Up Sign "BE PREPARED TO STOP"	\$44.42
CON72038 36FV-MS	36" Roll Up Sign "ACCIDENT SCENE AHEAD"	\$44.42
CON72045 36FV-MS	36" Roll Up Sign "WORK ZONE AHEAD"	\$44.42
CON72065 48SBR-MS	36" Florsc Roll Up Sign "ONE LANE ROAD"	\$119.35
CON72080 48SBR-MS	48" Florsc Roll Up Sign "MEN WORKING"	\$119.35
CON72085 48SBR-MS	48" Florsc Roll Up Sign "TRUCKS ENTERING"	\$119.35
CONE TOP SIGN W/ ARROW	12 3/4 X 10 1/2 Org Single Sided Reflective	\$32.06

TOOLING

Greenlee® “O” Die Pop Tool

- Designed for crimping a wide range of overhead service entrance connections, overhead splices, and overhead taps
- Easy-to-use MD-6 type “pop” tool, K425 tools are equipped with D³ die groove and either “BG” or “O” die groove

K4250



Greenlee® “BG” Die Pop Tool

- The D³ die groove serves as a die seat for all Greenlee KD6 and industry “W” type dies
- Bent fiberglass handles provide a solid grip, good leverage and better durability than wood

K425BG

Slingco® - Hard Metal Cutter

- The handles surfaces are designed to allow a firm, secure grip. The ratcheting action makes these cutters easy to operate even in limited spaces with just moderate pressure.
- ACSR and Hard Cable
- Do not use on energized lines

TCU09280



CM® TOR07505 Tornado 360™ Lever Hoist

- 3/4 Ton Load
- 5 FT. H Lifting
- 38.2 FT.- LB. Rated
- 1.06 IN. Hook Opening
- Positive load control enclosed weston type brake stays clean and dry for precise load positioning

HOI46050



CM® COFFING® LSB RATCHET HOIST

- 3/4 Ton Load
- 10 ft. Lift
- With Load Limiter



SAFETY SUPPLIES

FallTech® APEX Pro Wood Pole Fall Restrict

8180D-10077



NEW

APEX Pro Wood Pole
Fall Restrict Devices
for Utilities

FALLTECH®

**APEX
PRO**

Designed for exceptional user experience and performance, the patent pending FallTech® APE-X™ Pro Wood Pole Fall Restrict Device (WPFRD) eliminates the shortcomings of traditional fall restrict devices, allowing you to work smoother and faster than ever before.

Distribution | 8180D



Transmission | 8180T



Replacement Components

APEX™ Pro

Distribution | 8180DS



Transmission | 8180TS



Distribution or Transmission | 8180R



LINEMAN TOOLS

Klein Tools® Lineman Hammers

The Klein Tools Lineman's Hammers feature two tools in one with the built-in J-hook remover. Both rugged hammers are well-balanced, with the weight to drive lag bolts. The forged, tempered-steel heads are only 3-3/4-Inch [95 mm] long for use in tight areas. The Double-Face Hammer (Cat. No. 80936) has identical faces with 1-3/4" [4.5 cm] round-crown driving surface and beveled edges. The Milled-Face Hammer (Cat. No. 80936MF) has one milled-face for driving staples and common, unhardened nails while the other side is smooth for driving heavy-duty hardware.

80936, 80936MF



Cat. No.	UPC 0-92644+	Description	Feature	Head Weight	Overall Length
80936	81606-2	Lineman's Double-Face Hammer	Double-Face	2.25 lb (1 kg)	14.25" (36.2 cm)
80936MF	81000-8	Lineman's Milled-Face Hammer	Milled-Face	2.25 lb (1 kg)	14.25" (36.2 cm)

Visit www.kleintools.com for warnings and instructions.



Milwaukee® Lineman's 5 in 1 Ratcheting Wrench w/ Milled Strike Face

Our MILWAUKEE® Lineman's 5-in-1 Ratcheting Wrench features the most durable ratchet. These wrenches have large directional switches that you can easily press while wearing gloves. The durable forged steel construction provides you with longer tool life. The wrench fits 3/4", 1", and 1-1/8" square sockets and 9/16" and 3/4" standard sockets.

48-22-9216M



Milwaukee® Lineman's High-Leverage Ratcheting Wrench w/ Milled Strike Face

Our Lineman's High-Leverage Ratcheting Wrench features the most durable ratchet. This MILWAUKEE® ratchet wrench also has a large directional switch that you can easily press while wearing gloves. The high-leverage wrench fits 3/4", 1", and 1-1/8" square hardware.

48-22-9213



TRANSFORMER BAGS

Meltblown Technologies Transformer Bag Spill Kit

- Multiple layers and cord reinforcement resist punctures and tears
- UV stabilization protects the material from degradation during extended exposure to sunlight
- Cold-crack resistance eliminates failures in extremely cold temperatures
- Flexibility and light weight allow for easy handling and quick installation
- Meltblown polypropylene pads are included in each kit to absorb any leaked dielectric fluid



Item #	Description	Bag Size	Kits/Box	Box/Pallet
MBT-TBK-4080	40" x 80" Transformer Bag	40" x 80"	12	16
MBT-TBK-6090	40" x 80" Transformer Bag	40" x 80"	8	16
MBT-TBK-8490	40" x 80" Transformer Bag	40" x 80"	6	16
MBT-TBK-112X2	40" x 80" Transformer Bag	40" x 80"	4	16

*Each Kit includes (2) Meltblown Polypropylene pads that together absorb 2.5 gallons.



Product	Product Description
SAF25001	GPSK-20 UNIVERSAL SPILL KIT YELLOW DRUM
SAF25000	GPSK-TRK 8.7 GAL MRO UNIVERSAL TRUCKER SPILL
SAF15932	GPSK30 UNIVERSAL SPILL KIT 30 GALLON
OSSK- TRK-HANES	TRUCK SPILL KIT MODERN DISPOSAL



BUCKET KIT



Product	Product Description
ZAB8725-P	Slingco® ZAB8725 Handline Block
HOI70045	Harrington LBO15-5 Chain Lever Hoist, 1-1/2 ton, 5 ft Lift
USSG-008-EREC-17915	Utility Solutions USSG-008-EREC External
USTS-040-17915	Utility Solutions USTS-040 40 ft, Blue
187-4-BLANKET-12486	PIP® 187-4 Rubber Insulating Blanket, Class 4, Orange
188-4-BLANKET-12486	PIP® 188-4 Rubber Insulating Blanket, Class 4, Orange
TEM25364	Greenlee® 704 HD Cable Cutter, 21 in, 350KCMIL [MCM] CAP.
48-22-8276-11961	Milwaukee® 48-22-8276 Aerial Oval Bag
K425BG-11113	Greenlee® K425BG Crimp Tool, Mechanical, 50020650
K4250	Greenlee® K4250 Crimping Tool with D3 and O-DIR Grooves
ZPE10962-15244	Slingco® ZPE10962 Blanket Pin
TL-PE-1	Tallman TL-PE-1 Anchor Rod Pulling Eye
TCU09280-15244	Slingco® TCU09280 ACSR Ratchet Cutter
2585500-10127	True Temper® 2585500 Forged Square Point Shovel
027-2584300-12259	True Temper® 027-2584300 LHRP F/G Handle Shovel
OR150-45C	Honeywell OR150-45C Class 3 line hose with connector, 4.5 ft
48-13-7805-11961	Milwaukee® 48-13-7805 Shockwave Lineman's, 11/16 in x 22 in
THA99149	Nicholson® 80951 General Purpose Hacksaw, 10 in to 12 in
1807-3	Estex 1807-3 Aerial Bucket for Bolt Cutters, Comp. Tool
TS1/2X26-48	Transformer Sling, 2200 lb Capacity, 1/2 in, 26 in-48 in
H4722	Hubbell H4722 15 Spiral Link Stick, DAL 27 in
REL-GSB	Reliable REL-GSB Pole Mounted Ground Support Bar
REL-R15-KR	Reliable REL-R15-KR 15 ton Die
MAI70440	Weiler® 44020 Hardwood Handle, Tapered Wood, 60 in
MAI70072	Weiler® 42054 Street Broom, 18 in, 5-1/4 in Trim Length, Orange
ENR1-08	ENR1X8' Endless Poly Round Sling, Purple, 8 ft
2821-22-11961	Milwaukee® 2821-22 M18 FUEL SAWZALL Reciprocating Saw & 2
2978-220-11961	Milwaukee® 2978-220-11961 M18 FORCE LOGIC 6 ton Linear Utility

BUCKET KIT

Product	Product Description
RCB6YB-11454	JBC® RCB6YB Retractable Cone Bar, Engineered Grade
THA38650	Klein® CL900 2000A Digital Clamp Meter
CON40005	JBC® Wide Body DOT Traffic Cone, 28 in, with 4 in & 6 in, RS70032CT3M64
GPSK-CFB-16546	Meltblown GPSK-CFB Universal Emergency Response Spill
TEL20215	Milwaukee® 2354-20 M18™ LED Search Light, 1,250 Lumens
TEL20340	Milwaukee® 2727-21HD M18™ 16 in Fuel Chainsaw Kit
48-13-6711-11961	Milwaukee® 48-13-6711 Shockwave Lineman's, 1-1/16 in x 18 in
48-13-6707-11961	Milwaukee® 48-13-6707 Utility Auger, 13/16 in x 18 in
48-13-6705-11961	Milwaukee® 48-13-6705 Utility Auger, 11/16 in x 18 in
TEL26515	Milwaukee® 2865-22 M18™ FUEL 7/16 Hex High Torque Impact
8613CK-10143	H.K. Porter® 8690CK Cutterhead, Replacement
THA63691	H.K. Porter® 0190FC Bolt Cutter with Fiberglass Handle, 24 in
THA36078	Klein® 470 Swivel Hook with Plunger Latch
1685-31-11611	Klein® 168531 Parallel Jaw Grip, 4-1/2 in Length
KT4500-11611	Klein® KT4500 Parallel Jaw Grip 4500 Series for ACSR
THA37737	Klein® 1684-5 Grip for High Strength Cables, 0.55 in
1656-20-11611	Klein® 1656-20 Chicago Grip for Bare Cables, 0.2 to 0.4 in
THA37725	Klein® 1604-20 Havens Cable Grip, 0.125 Min, 0.50 Max
THA41575	Klein® 1802-30S Block & Tackle
25-A-11762	Lug-All® 25-A Standard Latching Hooks, 1-1/2 ton
187-4-BLANKET-12486	PIP® 187-4 Rubber Insulating Blanket, Class 4, Orange



DIGGER KIT



Product	Product Description
SAE10425-15244	Slingco® SAE10425 Anchor Tool Locking Dog
SAE09639-15244	Slingco® SAE09639 Anchor Tool Orange Kelly Bar
SAE08666-15244	Slingco® SAE08666 Anchor Tool Yellow Kelly Bar
TSG	Tallman TL-DNTGR Temporary Screw Ground
SAE10427-15244	Slingco® SAE10427 Anchor Tool, 2 5/8 Kelly Bar
THA97090	True Temper® 1160000 Post Hole Digger Bar, 69 in
2585500-10127	True Temper® 2585500 Forged Square Point Shovel
027-2584300-12259	True Temper® 027-2584300 LHRP F/G Handle Shovel
OSSK-CFB-16546	Meltblown OSSK-CFB Oil Only Spill Kit
TS1/2X26-48	Transformer Sling, 2200 lb Capacity, 1/2 in, 26 in-48 in
7010 871 0280-12167	Stihl® 7010 871 Personal Protective Kit
REL-1215P-SNAP	Reliable REL-1215P-SNAP Bag, Snap Bucket
REL-TMP-72-12FF	Reliable REL-TMP-72-12FF HYD Tamper with Whips & CPLGS
REL-PE	Reliable REL-PE Pulling Eye
REL-MGRDH	Reliable REL-MGRDH Ground Rod Driver with Handles
20185100-10127	True Temper® 20185100 Sledge Hammer, Fiberglass, 10 lb, 36 in
2050	Reliable 2050 8' Split Post Hole Digger
852	Reliable 852 9' Digging Spud with Tamper
1056	Reliable 1056 9' Heavy Tamp Bar
2034	Reliable 2034 9' Master Shovel (ASH)
2025E	Reliable 2025E 9' Master Spoon (EP) Ash
T-029-054-0175	Peavy T-029-054-0175 Cant Hook, 54 in
CON72000	DynaLite™ DL1000W Compact Aluminum Sign Stand
RUR48-200	Signs & Safety Reflective Roll Up Sign Utility WORK AHEAD, 48 in
TIE11730	427FH Ratchet Strap with Flat Hook, 4 in x 27 ft
10S003/8-05	HSI® 10S00 3/8 in x 5 ft Single Chain Sling, Grade 100, Alloy
OIL12007	Stihl® 0781-516-5001 Bar & Chain Oil, 1 qt
3689-005-0074	Stihl® 26RM3-74 Micro Chain, 18 in, 3689 005 0074
1141 200 0681 US-12167	Stihl® 1141 200 0681 Chainsaw, MS 271-Z, 45CM/18 in

DIGGER KIT

Product	Product Description
MAI70440	Weiler® 44020 Hardwood Handle, Tapered Wood, 60 in
MAI70072	Weiler® 42054 Street Broom, 18 in, 5-1/4 in Trim Length, Orange
2853900-10127	Razor-Back® 2853900 Tine Bow Rake, 15 in, Forged, Fiberglass
CON40120	Mutual Industries 14994-27-18 Vinyl Flag with 27 in Staff, Orange, 18 in x 18 in
105B5/8X-06	HSI® 105B 5/8 in x 6 ft 6X25 EIP IWRC Flemish Loop Wire Rope Sling
105B1/2X-05	HSI® 105B 1/2 in x 5 ft 6X25 EIP IWRC Flemish Loop Wire Rope Sling
105B1/2X-04	HSI® 105B 1/2 in x 4 ft 6X25 EIP IWRC Flemish Loop Wire Rope Sling
ENR2-10	ENR2X10' Endless Poly Round Sling, 10 ft, Green
ENR1-06	ENR1X6' Endless Poly Round Sling, 6 ft, Purple
ENR1-04	ENR1X4' Endless Poly Round Sling, 4 ft, Purple
FIT61552	Campbell® 5411035 Spa Shackle Galvanized, 3-1/4 ton WLL, 419-G 5/8 in
FIT61553	Campbell® 5411235 Spa Shackle Galvanized, 7/8 in, Screw Pin, 419-G 3/4 in
ZLD10016-15244	Slingco® ZLD10016 DIRT TARP, 8' x 8'
1684-5F-11611	Klein® 16845F Grip for High Strength Cable
8613CK-10143	H.K. Porter® 8690CK Cutterhead, Replacement
63324-11611	Klein® 63324 Steel-Handle Bolt Cutter, 24 in
MAT25005	Slingco® ZLD09186 Reel Lifter, 5000 lb Capacity

Illumagear 6th Sense Voltage and Current Detector

- Detects Voltage and Current
- Audible and visible warnings
- Bluetooth and Internal Accelerometer

S100030-101-16846



Check Out Demo!

Contact your Sales Rep



BUFFALO/HEADQUARTERS 55 James E. Casey Dr, Buffalo, NY 14206 **716.826.2636**
ROCHESTER 20 Jetview Dr, Rochester, NY 14624 **585.235.0160**
SYRACUSE 6181 Thompson Rd STE 500A, Syracuse, NY 13206 **315.299.4114**
WATERTOWN 22432 US Route 11, Watertown, NY 13601 **315.782.8247**

ALBANY 156 Railroad Ave Albany, NY 12205 **518.438.0139**
CONNECTICUT 1 Shoreline Dr, Suite 6, Guilford, CT 06437 **203.481.3469**
CAROLINAS 4350 Thermal Ave, Midland, NC 28107 **704.220.1779**
WWW.HANESSUPPLY.COM