



# DUST EXTRACTION



► SURFACE GRINDING



► TUCK POINTING



► HOLE DRILLING



► CHIPPING



# DUST EXTRACTION



## ARE YOU READY?

OSHA has issued a final rule to curb lung cancer, silicosis, chronic obstructive pulmonary disease (COPD) and kidney disease in America's workers by limiting their exposure to respirable crystalline silica. As of June 23, 2017, OSHA will require employers to limit their employees' exposure to respirable crystalline silica dust to 50 cubic microns or lower, averaged over an eight-hour day.

COMPLIANCE  
ENFORCED AS OF:

**JUN 23  
2017**



### WHAT IS CRYSTALLINE SILICA?

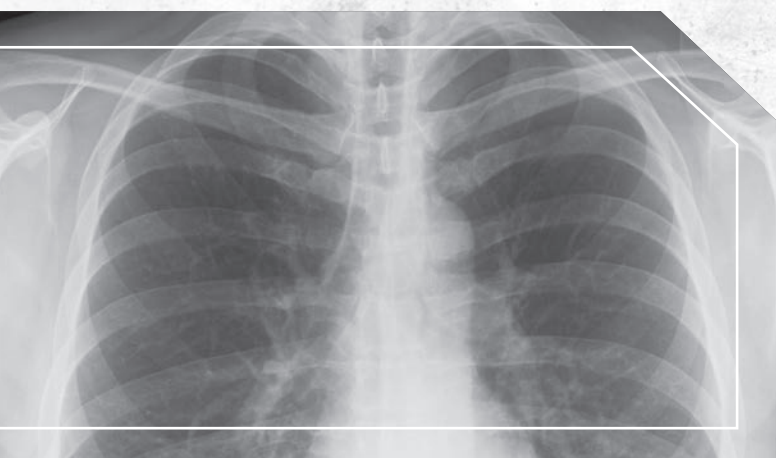
Crystalline silica is a basic component of soil, sand, granite, and many other minerals. Quartz is the most common form of crystalline silica. All forms may become respirable size particles when workers **chip, cut, drill, or grind** objects that contain crystalline silica. In addition to increased risks for lung cancer, COPD and kidney disease, workers may develop **acute silicosis** after a few months or as long as two years following exposures to high concentrations of respirable crystalline silica. During 2001-2010, 1,437 workers had silicosis coded as their underlying or contributing cause of death — A disease in which there is **no cure** for!



### EMPLOYER COMPLIANCE OPTIONS:

1. Use system defined by **Table 1** of regulatory standards for application-based compliance in the construction industry.
2. Measure amount of silica that workers are exposed to if it may be at or above an action level of 25  $\mu\text{g}/\text{m}^3$ , averaged over an eight hour day.
  - *Protect workers from respirable crystalline silica exposures above the PEL of 50  $\mu\text{g}/\text{m}^3$ , averaged over an 8-hour day.*
  - *Use dust controls to protect workers from silica exposures above the PEL.*
  - *Provide respirators to workers when dust controls cannot limit exposures to the PEL.*

See regulatory text for standard, with complete Table 1 at:  
[www.osha.gov/silica/SilicaConstructionRegText.pdf](http://www.osha.gov/silica/SilicaConstructionRegText.pdf)

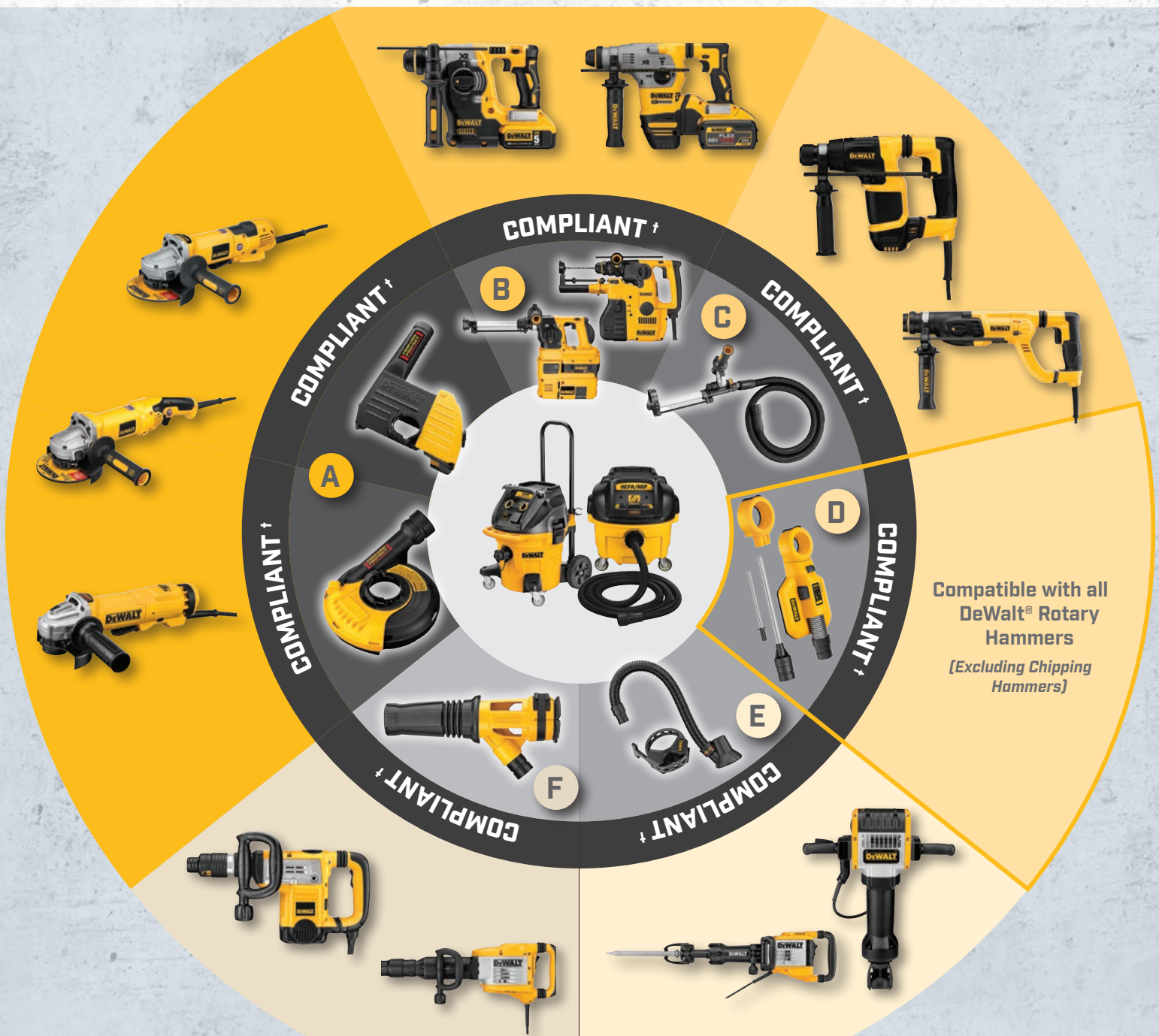


### WHAT PROCEDURES ARE REQUIRED?

- Establish and implement a **written exposure control plan** that identifies tasks that involve exposure and methods used to protect workers, including procedures to restrict access to work areas where high exposures may occur.
- Designate a **competent** person to implement the written exposure control plan.
- Restrict **housekeeping** practices that expose workers to silica where feasible alternatives are available.
- Offer **medical exams**—including chest X-rays and lung function tests—every three years for workers who are required by the standard to wear a respirator for thirty or more days per year.
- **Train workers** on work operations that result in silica exposure and ways to limit exposure.
- **Keep records** of workers' silica exposure and medical exams.



# GRINDING & DRILLING SYSTEMS



## COMPATIBLE DEWALT® TOOLS

<b>A</b>	D28114, D28114N, D28115, D28115N, D28131, DWE402, DWE402K, DWE402N, DWE4214, DWE4222, DWE4222N, DWE4224, DWE46153
<b>B</b>	DCH273, DCH293
<b>C</b>	D25052, D25133, D25260, D25260, D25262, D25263, DC212, DCH133
<b>D</b>	DC25416, D25413, D25501, D25601, D25603, D25723, D25723, D25721, D25763, D25761, D25553, D25651 *Also compatible with tools from categories "B", "C", and "F."
<b>E</b>	DC25416, D25413, D25501, D25601, D25603, D25723, D25723, D25721, D25763, D25761, D25553, D25651
<b>F</b>	D25831, D25851, D25891, D25899, D25901, D25941



† System is compliant to the Exposure Control Methods described in Table 1 of 29 CFR 1926.1153 when outlined components are operated and maintained in accordance to manufacturer's instructions.



# DEWALT® COMPLIANT SYSTEMS



DeWalt provides solutions to reduce airborne dust. Using a dust control system can decrease the potential of inhaling dust, increase visibility and reduce cleanup and maintenance costs. DeWalt's Perform and Protect Dust Management Products provide solutions for the following concrete applications: cutting, grinding, and drilling.



## 10 GAL HEPA DUST EXTRACTOR

**Automatic Filter Cleaning** - Features a continuous, automatic filter cleaning system. With its dual filters, every 30 seconds one of the filters is back rushed with air.

**HEPA Filtration** - Comes with HEPA Filters (DWV9320) and meets the EPA Lead Related Renovations, Repair and Painting (RRP) Rule for HEPA Vacuum when used with DWV9320 filters.

**Rugged Telescoping Handle (10 gal only)** - Provides portability while still delivering compact design.

**Variable Suction (10 gal only)** - Allows user versatility in different applications.

**Power Tool Actuation** - Controls the On/Off operations of the vacuum with a power tool

**Universal Connector** - Quick connect to tools, provides swivel capability.

8 GALLON	10 GALLON
TEL10200 DWV010	TEL10605 DWV012
<b>\$349.00</b>	<b>\$549.00</b>



### DISPOSABLE LINERS FOR DEWALT DUST EXTRACTORS

Allows user to quickly and efficiently empty the tank without releasing harmful dust to the environment.

#### PAPER LINERS - 5 PACK

TAC10257 DWV9401 **BUY 6+ AT \$13.92<sup>ea</sup>**

#### PLASTIC LINERS - 5 PACK

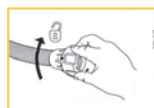
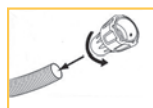
TAC10255 DWV9400 **BUY 6+ AT \$13.92<sup>ea</sup>**

### UNIVERSAL CONNECTOR FOR DEWALT DUST EXTRACTORS

Allows for quick, easy, and durable connection between 1-1/4" vacuum hose and various DW tools & shrouds. Positive lock maintains connection to dust port and the swivel capacity allows connector to move freely to reduce hose kinking.



TAC10205 DWV9000 **BUY 6+ AT \$17.13<sup>ea</sup>**



DWV9000 is included with DWV012 Dust Extractor.

## ADAPTORS FOR DWV9000



### TAPERED ADAPTER FOR DEWALT DUST EXTRACTORS

Fits with DWV9000 universal connector for quick and easy connection to tool dust port and ports from 1.14-1.45 inches.

TAC10245 DWV9110 **BUY 6+ AT \$11.41<sup>ea</sup>**



### 35MM RUBBER ADAPTER FOR DEWALT DUST EXTRACTORS

Fits with DWV9000 universal connector for quick and easy connection to tool dust port and ports with 1.37 - 1.50 inches.

TAC10250 DWV9120 **BUY 6+ AT \$12.84<sup>ea</sup>**

## LARGE HAMMER DUST SOLUTIONS



### MOST UNIVERSAL SOLUTION

#### LARGE HOLE DRILLING & CLEANING KIT

Features two Interchangeable drilling heads for optimum dust removal. One for holes up to 1-1/2" and one for holes up to 2". Tough Rubber Seal allows for adhesion to most masonry surfaces.

TAC10590 DWH050K  
**\$172.00**

**BUY 6+ AT**  
**\$161.25<sup>ea</sup>**



#### DEMO HAMMER DUST EXTRACTOR

Compatible with DEWALT Demo Hammers D25980 and D25960 and accepts DEWALT Pointed and Flat Chisels up to 1.25" wide. Fits DW Universal Hose Connector which allows for quick connection to hose & swivel capability.

TAC10225 DWH052K  
**\$101.71**



**BUY 6+ AT**  
**\$94.93<sup>ea</sup>**



#### CHIPPING HAMMER DUST EXTRACTOR

Compatible with all DEWALT SDS MAX/Hex combi hammers and breakers and fits the D25553K, D25651K, and D25831K DEWALT Spline Drive Hammers. Includes 3 adaptor collars and 3 end nozzles for different chisel lengths.

TAC10220 DWH053K  
**\$124.57**



**BUY 6+ AT**  
**\$116.27<sup>ea</sup>**

## SDS HAMMER DUST EXTRACTORS



#### DUST EXTRACTION FOR L-SHAPE SDS HAMMER

Filters dust and debris during high performance drilling. Dust extraction lasts two seconds after drill is switched off for an efficient clean. Use with D25303, D25304, D25313, D25314, D25323, and D25324 hammers.

TAC10575 D25300DH  
**\$238.07**

**BUY 6+ AT**  
**\$219.76<sup>ea</sup>**



#### DUST EXTRACTION SYSTEM FOR 1" 20V MAX SDS ROTARY HAMMERS

Filters dust with a powerful suction and delays power-off for two seconds after switching off to ensure dust extraction through the hose. Use with DCH273P2 or DCH273B hammers.

TEL30480 D25303DH  
**\$164.00**

**BUY 6+ AT**  
**\$153.75<sup>ea</sup>**



#### DUST EXTRACTOR TELESCOPE W/ HOSE FOR SDS ROTARY HAMMERS

Filters dust and debris during high performance drilling. Dust extraction lasts two seconds after drill is switched off for an efficient clean.

TAC10210 D25301D  
**\$111.42**

**BUY 6+ AT**  
**\$104.00<sup>ea</sup>**

## ANGLE GRINDER DUST SHROUDS



#### 5"/ 6" CUTTING & TUCKPOINTING SHROUD

• Adjustable depth-of-cut shoe allows user to adjust depth-of-cut.

##### SHROUD ONLY

TAC10235 DWE46100  
**\$137.33**

**BUY 6+ AT**  
**\$128.75<sup>ea</sup>**

##### SHROUD W/5" GRINDER (10 AMP)

TAC10580 DWE46101  
**\$266.67**

**BUY 6+ AT**  
**\$250.00<sup>ea</sup>**



#### 5" SURFACE GRINDING SHROUD

• Dust collection shroud with flush grinding door allows dust collection for flush edge grinding

##### SHROUD ONLY

TAC10230 DWE46152  
**\$71.42**

##### SHROUD W/5" GRINDER (10 AMP)

TAC10595 DWE46153  
**\$228.57**



#### 7" SURFACE GRINDING SHROUD

• Spring loaded, hinged door, provides a dust collection solution for both open area grinding and flush edge grinding.

• Fits all DEWALT LAGs but ideally suited for DWE4597 and DWE4557

• Tool-free clamp system.

TAC10240 DWE46170  
**\$135.71**

**BUY 6+ AT**  
**\$126.66<sup>ea</sup>**





## MILWAUKEE® SDS HAMMER DUST EXTRACTORS



### HAMMERVAC™ VACUUM ASSISTED DUST EXTRACTOR

The HAMMERVAC™ universal handle system allows quick set up and is compatible with major brands of SDS Plus rotary hammers and AC/DC hammer drills so users can drill safely into concrete and masonry without purchasing a new drill. It features a universal vacuum attachment system that is compatible with standard hose sizes of wet dry vacuums.

- Includes (3) side handle clamping collar assemblies, a replacement nozzle, adjustable depth stop and ruler.

TAC20415 5261-DE **BUY 6+ AT \$91.66**  
**\$84.61<sup>ea</sup>**

UNIVERSAL SOLUTION



### M12™ HAMMERVAC™ UNIVERSAL DUST EXTRACTOR

The HAMMERVAC's universal handle system is compatible with major brands of SDS Plus rotary hammers and AC/DC hammer drills, so users can drill safely into concrete and masonry without purchasing a new drill. Kit includes two batteries to power the dust extractor.



TAC20410 2306-22 **BUY 6+ AT \$241.42**  
**\$225.33<sup>ea</sup>**

EXTRA DUST BOX  
TAC20405 49-90-2340 **BUY 6+ AT \$45.71**  
**\$42.66<sup>ea</sup>**

UNIVERSAL SOLUTION



### 1-1/8" SDS PLUS ROTARY HAMMER & HAMMERVAC™ DEDICATED DUST EXTRACTOR

Milwaukee® HAMMERVAC™ Dedicated Dust Extractor features an inline dedicated design engineered to connect directly to and be powered by either the M18™ or M28 FUEL™ SDS Plus Rotary Hammers. This design allows for a compact fit in confined work spaces. Kit includes rotary hammer and 2 batteries.



TEL20300 2715-22DE **BUY 6+ AT \$788.57**  
**\$736.00<sup>ea</sup>**

OTHER OPTIONS	PART NO.	PRICE 1-5	PRICE 6+
1" SDS HAMMER KIT	2712-22DE	\$727.00	\$678.66
EXTRACTOR ONLY - 1"	2712-DE	\$162.85	\$152.00
EXTRACTOR ONLY - 1 1/8"	2715-DE	\$162.85	\$152.00
EXTRA DUST BOX	49-90-2342	\$45.71	\$42.66

## METABO® DUST EXTRACTION SOLUTIONS

### 5" MASONRY CUTTING & SCORING TOOL KIT

- Dustless concrete cutting/scoring kit.
- Precise low-dust cutting up to 1-1/16" deep, indoors and outdoors.



5" SHROUD (GRINDER NOT INCLUDED)

TAC27105 626730000 **BUY 6+ AT \$149.17**  
**\$139.22<sup>ea</sup>**

5" SHROUD W/ROLLERS

TAC27110 626731000 **BUY 6+ AT \$227.34**  
**\$212.18<sup>ea</sup>**



### CONVERTIBLE SHROUD FOR CONCRETE SURFACE PREP

- High torque - 150 inch lbs.
- Metabo anti-vibration handle.
- Dust collection shroud.



5" SHROUD (GRINDER NOT INCLUDED)

TAC27115 655153000 **BUY 6+ AT \$113.00**  
**\$105.00<sup>ea</sup>**

7" SHROUD (GRINDER NOT INCLUDED)

TAC27055 655154000 **BUY 6+ AT \$139.40**  
**\$130.10<sup>ea</sup>**



### 5" TUCK POINT SHROUD

- Dustless tuck pointing grinder kit.
- Powerful and fastest removal rate, especially in hard mortars.
- Optimum visibility of the work area for precise working.



TAC27057 62821600 **BUY 6+ AT \$94.05**  
**\$89.10<sup>ea</sup>**

### 5" GED SURFACE GRINDING SHROUD

- Extraction hood with flexible brush rim and optimized extraction channel for particularly low-dust grinding indoors and outdoors.



SHROUD ONLY

TAC27120 626732000 **BUY 6+ AT \$123.11**  
**\$114.90<sup>ea</sup>**



## 9 GAL HEPA VAC

WITH AUTO CLEAN

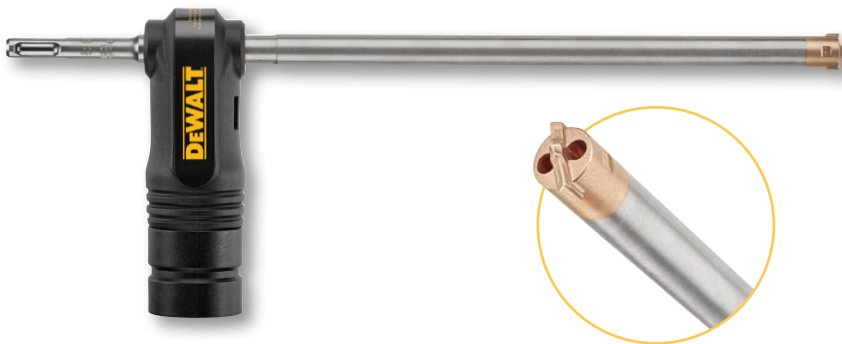
ASR35 ACP HEPA version meets or exceeds all regulatory standards where the HEPA vacuum is required, allowing the user to attain the highest level of dust protection.



Power outlet with auto start

Automatic electromagnetic vibration filter cleaning (Continuous suction)

# DUSTLESS HOLLOW CORE DRILL BITS



## Concrete Anchoring Solutions

**DEWALT**

**Powers**  
FASTENING INNOVATIONS

DeWalt® Hollow Core Bits are approved for use with Powers® AC200 Gold Acrylic and Pure 110 Epoxy. Approval pending for AC100.

### SDS PLUS & SDS MAX DUSTLESS HOLLOW CORE BITS

- Bit extracts dust while drilling for less dust, fast holes and fast adhesive anchor installation.
- Fits any SDS Hammer.
- Connects directly to DEWALT's Airlock System forming a secure, locking connection between bit and dust extractor.
- OSHA Table 1 Compliant.

#### SDS PLUS

SIZE	HSI NO.	VENDOR NO.	PRICE 1-5	PRICE 6+
1/2" X 9 3/4"	TCU16900	DWA54012	\$58.22	\$54.79
9/16" X 9 3/4"	TCU16915	DWA54916	\$72.45	\$68.19
5/8" X 9 3/4"	TCU16910	DWA54058	\$77.63	\$73.06
3/4" X 9 3/4"	TCU16905	DWA54034	\$86.68	\$81.58

#### SDS MAX

SIZE	HSI NO.	VENDOR NO.	PRICE 1-5	PRICE 6+
5/8" X 15 3/4"	TCU16930	DWA58058	\$153.19	\$144.18
3/4" X 15 3/4"	TCU16925	DWA58034	\$163.01	\$153.42
7/8" X 15 3/4"	TCU16935	DWA58078	\$168.19	\$158.29
1" X 15 3/4"	TCU16920	DWA58001	\$214.76	\$202.13
1 1/8" X 15 3/4"	TCU16940	DWA58118	\$272.98	\$256.92



### SPEED CLEAN™ SDS PLUS & SDS MAX DUST EXTRACTION BITS

- **Hollow drill bit** – connects to a vacuum system to deliver up to 50% time savings versus the conventional drill-blow-brush-blow anchor-installation method
- **Faster drilling** – provides up to 25% greater drilling speed thanks to less dust and reduced friction
- **Great durability** – one-piece design offers comparable life to Bosch SpeedX® bits

#### SDS PLUS

SIZE	HSI NO.	VENDOR NO.	PRICE 1-5	PRICE 6+
7/16" X 7 1/2"	TCU38040	DXS2074	\$61.50	\$57.40
1/2" X 7 1/2"	TCU38045	DXS2084	\$63.66	\$59.41
9/16" X 10"	TCU38050	DXS2094	\$79.79	\$74.47
5/8" X 10"	TCU38055	DXS2104	\$86.33	\$80.57
11/16" X 12 1/2"	TCU38060	DXS2114	\$95.49	\$89.12
3/4" X 12 1/2"	TCU38065	DXS2124	\$95.54	\$89.17

#### SDS MAX

SIZE	HSI NO.	VENDOR NO.	PRICE 1-5	PRICE 6+
3/4" X 12 1/2"	TCU38070	DXS5034	\$169.21	\$157.93
13/16" X 15"	TCU38075	DXS5044	\$174.61	\$162.97
7/8" X 15"	TCU38080	DXS5048	\$203.17	\$189.63
1" X 17 1/2"	TCU38085	DXS5054	\$220.60	\$205.89
1 1/8" X 20"	TCU38090	DXS5062	\$282.67	\$263.83
1 1/8" X 25"	TCU38095	DXS5082	\$294.24	\$274.63

## Concrete Anchoring Solutions



**BOSCH**

**SIMPSON**  
**Strong-Tie**

Bosch® Hollow Core Bits are approved for use with Simpson Strong-Tie® AT-XP Acrylic and SET-XP Epoxy.

**HAVE QUESTIONS?  
WE'RE HERE TO HELP.**

**1.888.426.3755**

Our knowledgeable sales associates will advise you on what you need to comply with the new standards, as well as recommend the best options for your individual industry.



# RESPIRATORS & PARTICULATE FILTERS



APF  
10

## 3M™ HALF FACEPIECE REUSABLE RESPIRATOR 6000 SERIES

- Comfortable soft, lightweight facepiece with easy-to-adjust head straps.
- NIOSH approved for negative pressure air purifying and supplied air dual airline applications.

SAF16010 6200

**\$14.18**

BUY 6+ AT

**\$12.51<sup>ea</sup>**



APF  
10

## 3M™ HALF FACEPIECE REUSABLE RESPIRATOR 7500 SERIES

- 3M™ Cool Flow™ Valve technology for heat reduction and easier breathing.
- Silicone face piece for soft, secure fit.
- Easily adjust facepiece with the dual-mode head harness.

SAF16033 7502

**\$35.40**

BUY 6+ AT

**\$29.00<sup>ea</sup>**



APF  
50

## 3M™ FULL FACEPIECE REUSABLE RESPIRATOR 6000 SERIES

- Large lens provides a wide field of view for excellent visibility.
- Lightweight well-balanced design and silicone faceseal for enhanced comfort, durability and ease of cleaning.
- Center adapter directs exhaled breath downward.

SAF16019 6800

**\$168.73**

BUY 6+ AT

**\$159.50<sup>ea</sup>**



## 3M™ P100 PARTICULATE FILTERS

- NIOSH approved.
- 99.97% filter efficiency.
- Sold by the pair.

PANCAKE FILTERS - SOLD IN PAIRS

SAF16012 2091

**\$7.30<sup>pr</sup>**

BUY 6+ AT

**\$6.90<sup>pr</sup>**

HARD SHELL - SOLD INDIVIDUALLY

SAF16028 7093B

**\$3.00<sup>ea</sup>**

BUY 6+ AT

**\$2.70<sup>ea</sup>**



APF  
10

## NORTH® 5500 SERIES HALF MASK RESPIRATOR

- Soft thermoplastic rubber for comfortable wear.
- Can be adapted to PAPR or Supplied Air

SAF69681 550030M

**\$13.80**

BUY 6+ AT

**\$12.00<sup>ea</sup>**



APF  
10

## NORTH® 7700 SERIES HALF MASK RESPIRATOR

- Soft, non-allergenic silicone seal provides excellent protection, comfort and fit.
- Low inhalation and exhalation resistance makes breathing easier.

SAF69700 770030M

**\$28.50**

BUY 6+ AT

**\$26.35<sup>ea</sup>**



APF  
50

## NORTH® FULL FACE RESPIRATOR 5400 SERIES

- Soft, pliable full facepiece seal offers a secure fit.
- Wide lens provides 200° field of vision.
- Easily converts to a PAPR or supplied air respirator.

SAF69686 54001S

**\$113.50**

BUY 6+ AT

**\$107.00<sup>ea</sup>**



## NORTH® P100 PARTICULATE FILTERS

- P100 Particulate Filters provide 99.97% Filter efficiency.

PANCAKE FILTERS - SOLD IN PAIRS

SAF69720 75FFP100

**\$6.50<sup>pr</sup>**

BUY 6+ AT

**\$5.80<sup>pr</sup>**

HARD SHELL - SOLD IN PAIRS

SAF69730 7580P100

**\$8.40<sup>pr</sup>**

BUY 6+ AT

**\$7.90<sup>pr</sup>**



APF  
10

## ELIPSE P100 LIGHTWEIGHT LOW-PROFILE RESPIRATOR

- Latex and silicone free, lightweight TPE face piece that is comfortable to wear for long periods of time.
- Low-profile design.

SAF43016 SPR457

**\$23.75**

BUY 6+ AT

**\$21.00<sup>ea</sup>**



## ELIPSE P100 REPLACEMENT FILTERS

- Provides maximum particulate protection (99.995%).

SAF43000 SPR321

**\$11.40<sup>pr</sup>**

BUY 6+ AT

**\$10.95<sup>pr</sup>**



APF  
1000  
USED  
WITH

## NORTH COMPACT AIR® 200 SERIES PAPR

- Airflow adjusts automatically, increasing safety and convenience.
- Breathing tube is located on the back, out of the way of your work space.
- Includes blower, battery, backpad, belt, charger, flow meter, and case.

TCU20045 CA201

**\$1,100.00**

BUY 6+ AT

**\$972.90<sup>ea</sup>**



APF  
10

## 3M™ 8511 DISPOSABLE RESPIRATOR, N95

- NIOSH approved for at least 95 percent filtration efficiency
- 3M Cool Flow Exhalation Valve reduces heat build-up.
- Two strap design for a secure fit.

SAF16025 8511

**\$24.25**

BUY 6+ AT

**\$19.40<sup>ea</sup>**